

Riverbulk offers Barge Service, Barge Terminal, Warehousing, and Manufacturing Space to the East Coast.

Located in a Federal Opportunity Zone on the Chowan River, Riverbulk's barge services and industrial facility offer critical services for companies looking to ferry components to a nearby port, or those in need of staging areas for larger off-shore projects. Riverbulk is capable of fleetting up to twelve, 300 foot barges along our 1000 foot pier with 350 feet of bulkhead for loading and a heavy duty crane pad capable of supporting 500 tons. In addition, there is a 100,000 sq. ft. of warehouse space and an additional 200,000 sq. ft. of shovel-ready land available for manufacturing or warehouse space. We're also a fully permitted sandblast and paint facility with an industrial wastewater system to process any runoff on site.



Contact Simon Rich at (252) 482-1011 or visit us online at Riverbulk.com to learn more.



50 ACRE
Heavy Industrial Site



1100 Ft.
of Waterfront



350 Ft.
Bulkhead for Barge Loading



12 Ft.
of Water Depth



100K Sq. Ft.
Warehouse Space for Lease



Heavy Duty
500 Ton Crane Pad



3 Phase 34.5 kVA &
Natural Gas on Site



200K Sq. Ft.
of Shovel-ready Land

115 Ft.
Wide Ramp

1000 Ft.
Pier



Tugs & Barges
Available



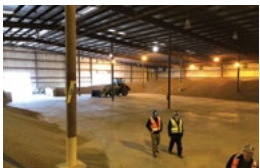
2
Heavy Hauling Winches



125 Dye Plant Rd.
Edenton, NC 27932



Tug and Barge receiving Wind Turbine Nacelles directly from ship's side in Morehead City NC. Amazon's Desert Wind Project



NORFOLK PORTS
24 Hrs.
• 125 Miles North

64 Mi.

MOREHEAD CITY PORT
30 Hrs.
• 185 Miles South

135 Mi.

150 Mi. to Raleigh, NC